

WHITESTAR SIGNATURE SYSTEM WITH
FUSION PHACO TECHNOLOGY

BLENDED TECHNOLOGY TO HELP YOU OPTIMIZE OUTCOMES



OPTIMIZE EVERY PROCEDURE AND EVERY SURGICAL OUTCOME



At every stage of cataract surgery, you are working to ensure your patient's safety and deliver the highest quality postop outcomes possible.

Exclusive **FUSION PHACO** Technology on the **WHITESTAR Signature** System provides:

- Integration of **FUSION Pump** Fluidics Management and **ELLIPS FX** Handpiece
- Choices and options to tailor the system to your preferred technique
- Increased efficiency during surgery

A HISTORY OF AMO INNOVATION IN PHACOEMULSIFICATION

The first closed phaco fluidic system

1993

First occlusion mode for phaco

1994

First micropulse phaco technology

1995

WHITESTAR Technology with cold phaco

2001

Variable WHITESTAR Technology: intraoperative micropulse control

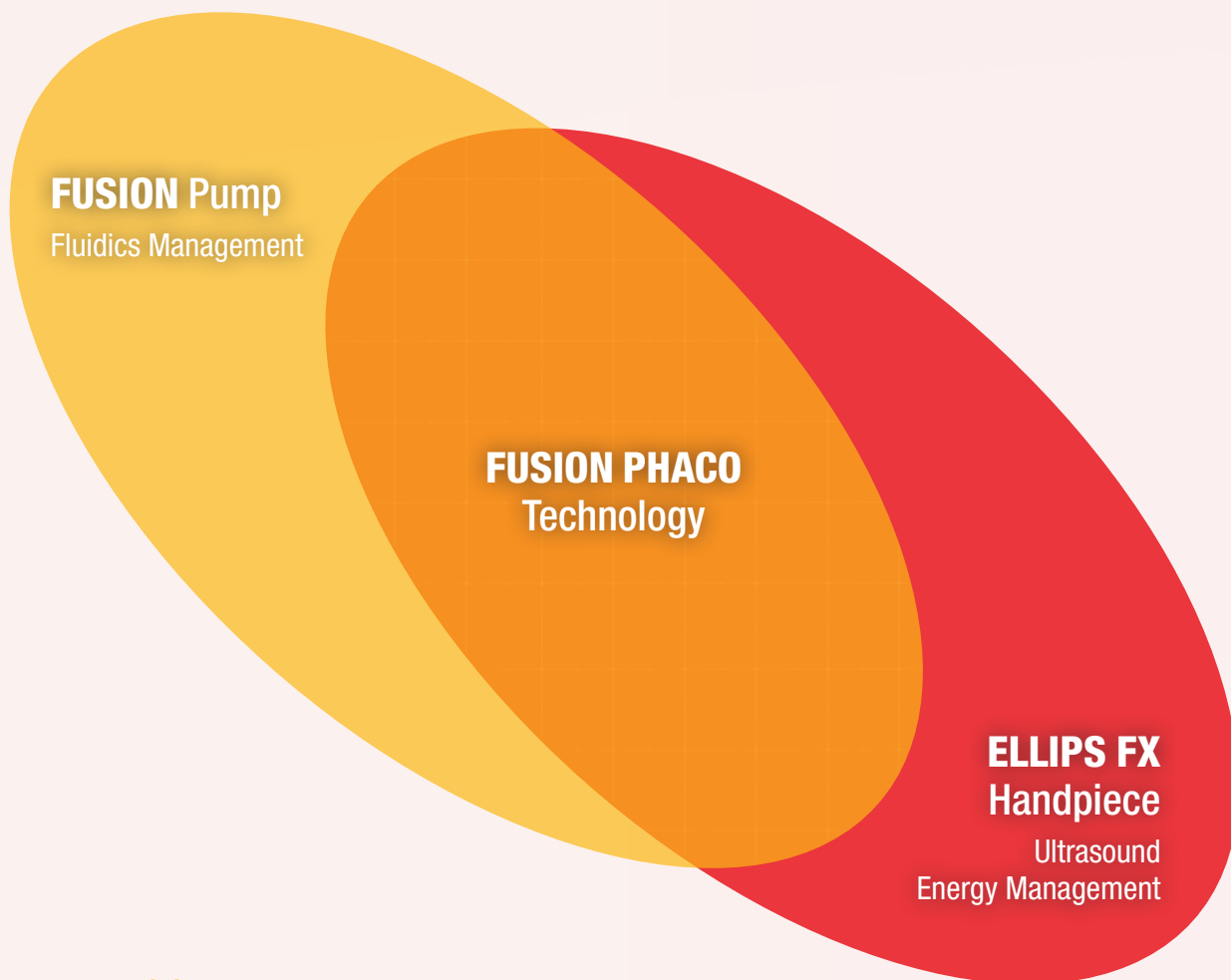
2002

2003

2004

2005

Experience the unprecedented technology, efficiency, and choices that only the truly innovative, **WHITESTAR Signature** System with **FUSION PHACO** Technology delivers.



FUSION Pump: Exceptional control and efficiency by combining the holdability of the peristaltic pump and the followability of the venturi pump in a convenient, single cassette.

ELLIPS FX Handpiece: Transversal and longitudinal phaco for smooth cutting and excellent efficiency.

*WHITESTAR ICE Technology—
Chamber stabilization*

*WHITESTAR Signature System
with FUSION Fluidics*

*ELLIPS FX
Handpiece*

*Wireless Advanced
Control Footpedal*

2006

2007

2008

2009

2010

2011

2012

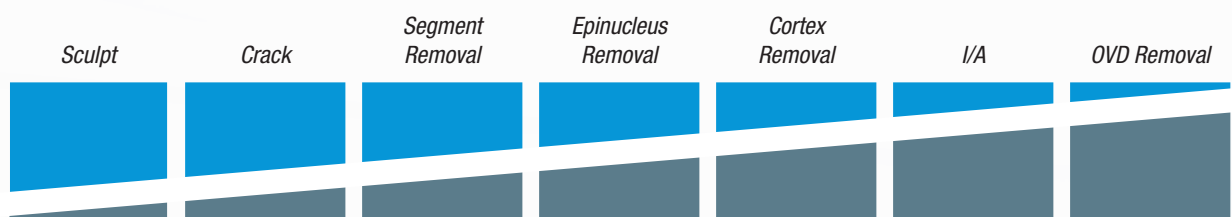
2013

FUSION PUMP: FLUIDICS MANAGEMENT

FUSION Pump Fluidics Management enables you to choose the most effective pump for your technique, peristaltic or venturi, based upon the stage of the procedure. The exclusive design of the **FUSION** Pump uniquely integrates the pumps in a single cassette, allowing you to switch between pumps at any time during the procedure. Each pump is designed with unique benefits that, when combined with your personal technique, result in excellent control and efficiency throughout the entire cataract procedure.

AT EACH STAGE OF SURGERY, YOU CAN CHOOSE THE IDEAL PUMP FOR YOUR TECHNIQUE.

Peristaltic Pump – provides excellent “holdability”



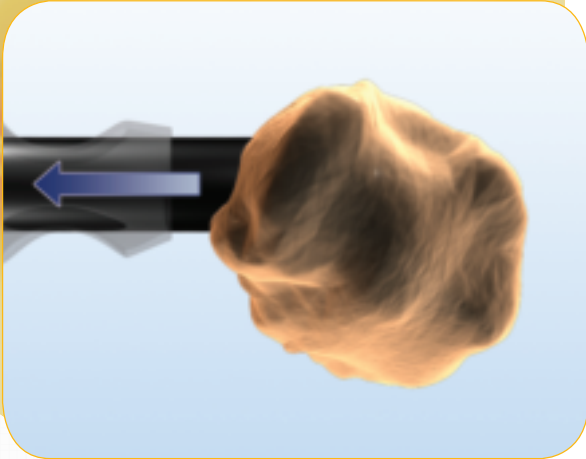
Venturi Pump – provides excellent “followability”



MAKING THE SWITCH IS EASIER THAN EVER

With the wireless Advanced Control Footpedal, you can switch between peristaltic and venturi pumps at any time during the case by pivoting the footpedal to the left or right.

PERISTALTIC PUMP: HOLDABILITY



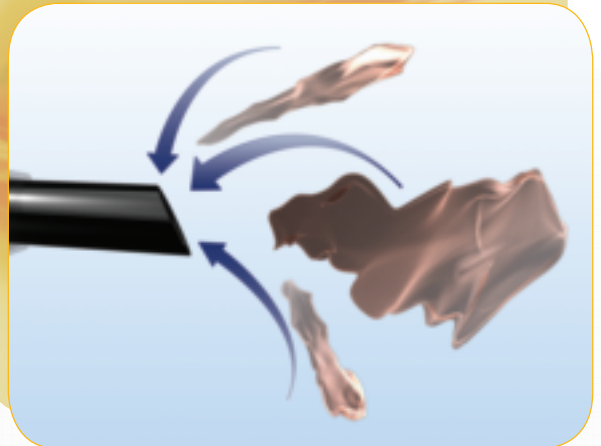
PERISTALTIC PUMP STRENGTHS

- Provides excellent “holdability” with low-flow, high-vacuum fluidics
- Easily holds large lens fragments at the tip, a safe distance from the posterior capsule
- Adjust vacuum, fluid flow, and rise time independently
- Promotes excellent chamber stability through automatic occlusion sensing

VENTURI PUMP STRENGTHS

- Provides superior “followability” with high-flow, low-vacuum fluidics
- Effectively draws small lens fragments and wispy cortex to the tip, reducing the need to chase strands
- Increased efficiency and responsiveness resulting from the linking of vacuum and aspiration modes
- Decreases lens chatter and may reduce effective phaco time

VENTURI PUMP: FOLLOWABILITY

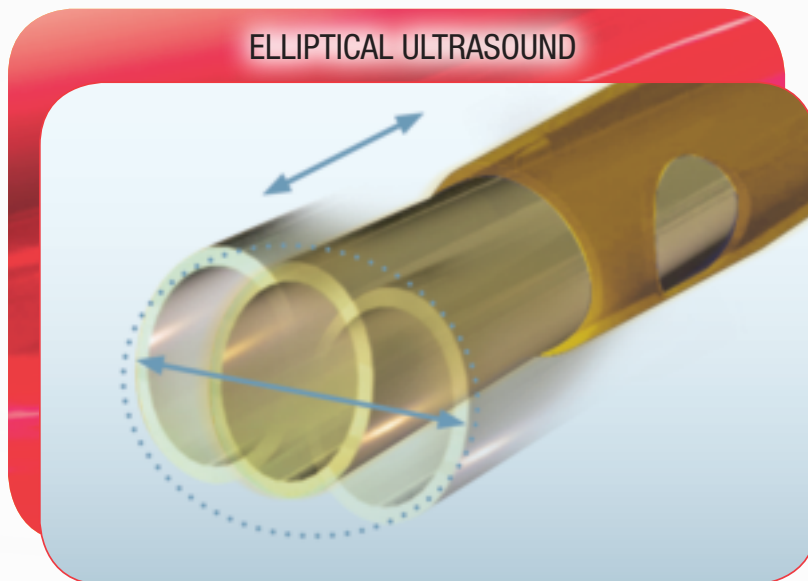


*The combination of peristaltic and venturi fluidics in the **FUSION** Pump creates two separate working zones: (1) peristaltic’s low-flow, high-vacuum zone, which I use for chopping; and (2) venturi’s high-flow, low-vacuum zone, which I find is ideal for segment removal. Having access to both pumps during a case lets me more precisely control every stage of the procedure and helps me give my patients their best possible outcome.*

– DAVID B. YAN, MD
TORONTO, CANADA

ELLIPS FX HANDPIECE: ULTRASOUND ENERGY MANAGEMENT

The **ELLIPS FX** Handpiece gives you the next level of lens extraction. The **ELLIPS FX** Handpiece generates a continuous three-dimensional tip movement. The path of the tip traces an ellipsoid and delivers smooth, efficient cutting with hard and soft lenses.



ELLIPS FX HANDPIECE ADVANTAGES

- Simultaneous blending of both transversal and longitudinal tip movement ensures smooth cutting and excellent efficiency
- Flexibility and versatility to work with curved or straight tip styles allows the system to match your preferred technique on any type of cataract

SMOOTH, EFFICIENT CUTTING THAT MATCHES YOUR PREFERRED TECHNIQUE



*I have been impressed by the cutting efficiency of the **ELLIPS FX** Handpiece. I have closely monitored the performance of the system, and I find that the efficiency of the **ELLIPS FX** Handpiece lowers phaco times, power settings, and requires less BSS. These factors have meaningful benefits for the safety of my patients in terms of less endothelial cell loss, less macular swelling, and less change in corneal thickness.*

– **KERRY ASSIL, MD**
LOS ANGELES, CA

THE **FUSION PHACO** TECHNOLOGY ADVANTAGE



*On its own, the smooth cutting of the **ELLIPS FX** Handpiece offers significant benefits to surgeons during cataract surgery. When combined with the advantages of the **FUSION** Pump, however, the **WHITESTAR Signature** System offers performance unlike anything I've experienced before. The **ELLIPS FX** Handpiece combines with the peristaltic pump to effectively hold large fragments at the end of the tip. With venturi on the other hand, the **ELLIPS FX** Handpiece provides phenomenal efficiency, without compromising chamber stability, due to efficient cutting even at low levels of vacuum.*

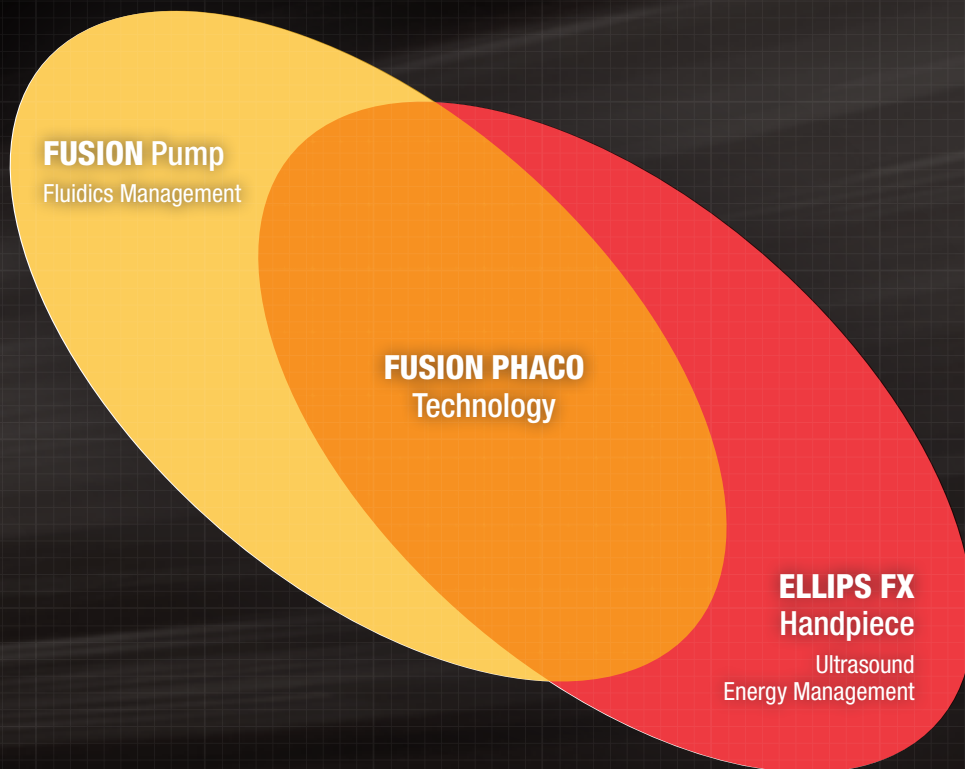
The choices available through the system's advanced energy and fluidics management technologies give surgeons like me the best of both worlds, letting me customize each procedure to my own preferences.

– DONALD NIXON, MD
ONTARIO, CANADA

CHOOSE YOUR OWN PATH TO OPTIMAL OUTCOMES

Get the only system that offers **FUSION PHACO** Technology to give you the technology, efficiency, and choices you need to optimize outcomes at every stage of cataract surgery.

Only **FUSION PHACO** Technology combines the precise control of **FUSION** Pump Fluidics Management and the efficient energy management of the **ELLIPS FX** Handpiece.



Experience the **WHITESTAR Signature** System with exclusive **FUSION PHACO** Technology in your practice today.

www.WHITESTARSignature.com

AMO Germany GmbH • Rudolf-Plank-Str. 31 • 76275 Ettlingen • Germany

AMO United Kingdom Ltd • Jupiter House • Mercury Park • Wycombe Lane • Wooburn Green • High Wycombe • Buckinghamshire • HP10 0HH • UK

AMO Netherlands BV • Weverstede 25 • 3431 JS Nieuwegein • Netherlands

AMO Belgium • Distributor de Ceunynck Medical • Kontichsesteenweg 36 • 2630 Aartselaar • Belgium

Abbott Medical Optics Norden AB • Kanalvägen 3A • 194 61 Upplands Väsby • Sverige

Abbott Medical Optics Norden AB, Filiaal i Finland • Rajatorpantie 41C • 01640 Vantaa • Finland

ELLIPS, the ELLIPS logo, WHITESTAR, FUSION, and WHITESTAR Signature are trademarks owned by or licensed to Abbott Laboratories, its subsidiaries or affiliates.

©2013 Abbott Medical Optics Inc. www.AbbottMedicalOptics.com

2013.05.16-CT6971

 **Abbott**
Medical Optics